




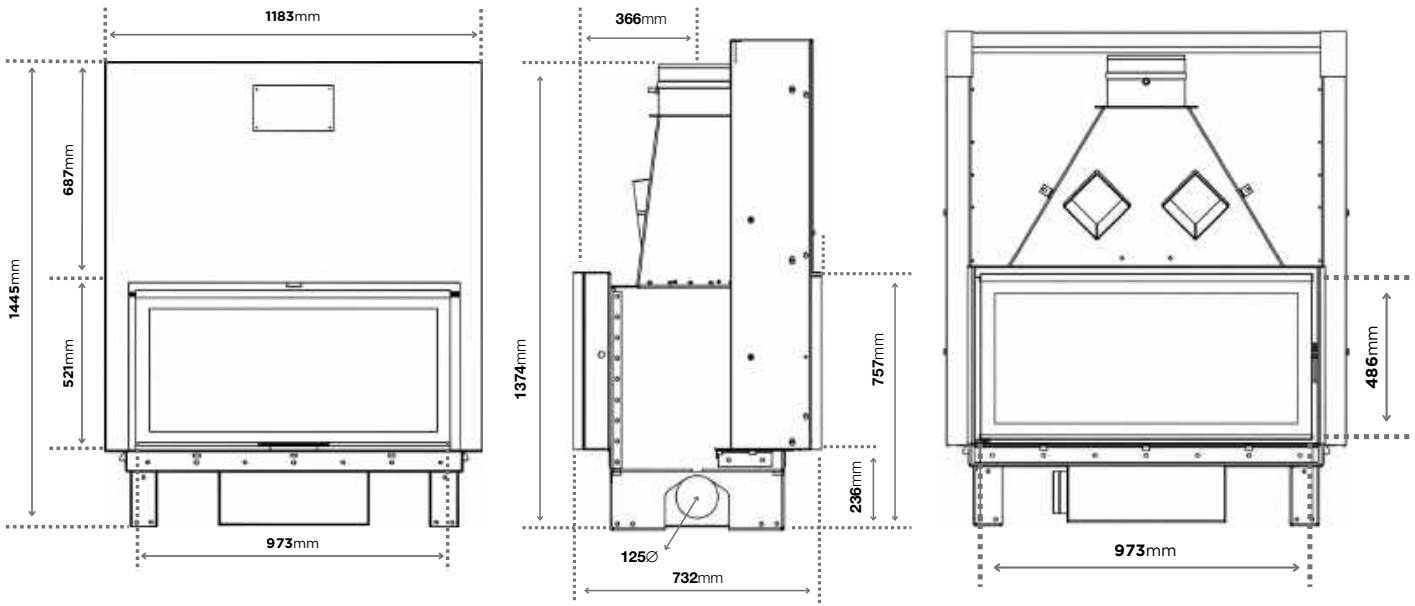




AXIS FAS120 DS

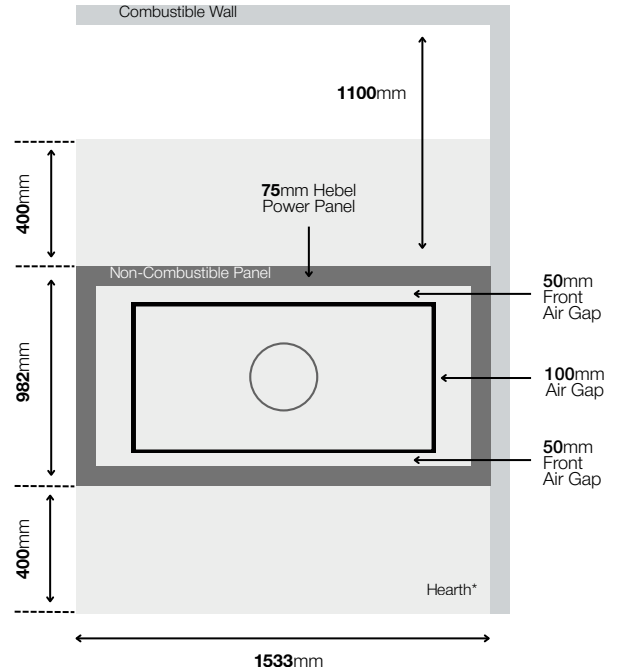
The Axis FAS120DF is a double-sided fireplace designed to deliver efficient heat distribution and visual continuity between adjoining spaces. Internal cast iron liners enhance heat retention and durability, while the tapered firebox base eliminates the need for a log pan for a cleaner, low-maintenance installation outcome.

-  Steel Fireplace with Cast Iron Liners
-  Includes Fire Grate and Ash Pan
-  High Performance Air Flow System
-  Crafted in France
-  Optional Outdoor Air Kit



MATERIAL	Steel firebox construction, grooved cast iron internal back panels, and black silk-screen printed ceramic glass.
KW OUTPUT / CAPACITY*	22.5kW
FACADE	Clean frame-less design (trim options available)
GLASS DOOR	Lift and swing door
GLASS VIEWING AREA	966mm W x 474mm H
MINIMUM FLUE HEIGHT	5.4
FLUE SIZES	230 (inner), 280, 330 mm (outer)
OUTSIDE AIR KIT	Optional extra - recommended for well insulated homes Required for 6 star or above rated homes
HOT AIR TRANSFER KIT	Not compatible
WARRANTY	10 years on firebox (heating element)
WEIGHT	290kg

Hearth & Clearance Guide



*Hearth must be a minimum of 75mm thick

*Heating capacity of the following appliances are a guide only and refers to areas with 2.4m ceilings and 6 or more star rated buildings. Heating output may vary depending on factors such as characteristics, quality of insulation, type of firewood used and climate zone. ** See warranty section in the installation manual for further details. *** Refer to the Installation Manual for full hearth dimensions and clearances.

Disclaimer: E&OE Images and diagrams are for illustration purposes only. Please note that all product measurements provided are approximate and may vary by 1-5 mm. Sculpt reserves the right to change these specifications without prior notice. This information does not replace the installation manual which provides more in depth information. Must be installed in a full masonry enclosure as per Australian & New Zealand standards AS/NZS 2918:2001.

All rights retained © Copyright 2026 Sculpt Fireplace Collection (ABN: 48 107 321 719)